

### 2nd Hand Uniform Shop - Term 2 Opening Hours

**OPEN: 1.30pm – 2.30pm**

- Friday lunchtimes - term-time only

For more information email [uniformshop.rangitotocollege@gmail.com](mailto:uniformshop.rangitotocollege@gmail.com)

### Eat chips - it helps keep people warm!

Did you know chip, biscuit, and foil packets can be fused together to create life-saving thermal blankets for those in need? Plus, it's a massive win for the environment - every foil-lined packet thrown in the rubbish takes up to 80 years to decompose! Let's turn waste into warmth instead.

**How you can help:** The next time you eat chips, biscuits, nachos, or crackers either at school or at home, please don't throw the foil wrapper away! Drop it into the collection bins. By donating your packets, you are joining a nationwide effort to provide warmth to over 102,000 Kiwis battling the cold this winter. Thank you for your kindness and support! Click the link to find out more <https://www.chippacketproject.org/>

### Fortnite Tournament

Are you interested in participating in a Fortnite tournament? If so, please take a moment to fill out this form to help us decide on the game mode(s) for the tournament.

<https://forms.gle/XweffGFgXDZ6s4YB8>

If you have any questions please email [184604@cloud.rangitoto.school.nz](mailto:184604@cloud.rangitoto.school.nz).

Hello everyone, this is Salt & Pepper Chinese Christian Club!

**Our meetings are held every Monday at lunchtime in M2.**

We warmly welcome all students who speak Mandarin or Cantonese to join us and build a welcoming community together. Whether you are a Christian, new to faith, or simply curious to learn more, you are always welcome here. We want this club to be a place of support and encouragement.

If you are going through challenges or feel uncertain about life, feel free to come talk with us — we would love to support, encourage, and pray for you. Please invite your Mandarin- or Cantonese-speaking friends to join our club as well!

大家好，这里是盐与光中文福音团契！

我们每周一中午都在M2教室聚会。

我们欢迎来自所有背景的华人、会说中文/粤语的学生加入我们，一同创造一个温暖的团契。

无论你是基督徒、信仰初学者，还是正在探索信仰，你都属于在我们当中。

我们希望这个团契能成为一个互相支持和鼓励的地方。

如果你正走在这条陌生环境迷茫的路，欢迎随时来和我们聊聊，我们很乐意为你提供帮助、鼓励，並为你祷告。

所以，请邀请更多会说中文/粤语的朋友来参加我们的团契吧！



### E x K FUN NIGHT brought to you by Ecorigami and Kabayan club!

We are collaborating to bring you a night you can't forget! Come along to our event on **Thursday 25th June 2026 at 4–6pm** in the **Rangi Centre** (doors will open at **3:30pm**).

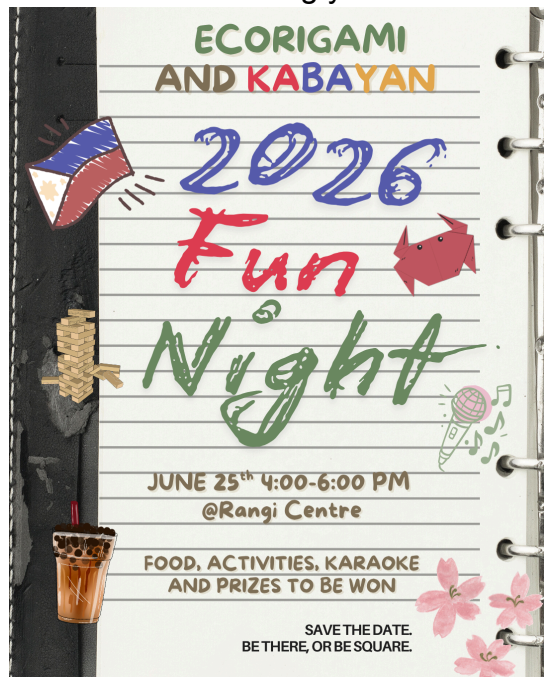
Entry fees are **\$15** and can be paid in front of the auditorium in **Week 9 morning tea and lunchtimes**.

This event will feature traditional fun Filipino party games, along with classic board games and an Origami Wall.

**Snacks and Gong Cha drinks will be provided**, as well as vouchers from Gongcha, Pizza Hut, Bounce, BurgerFuel, Bunnings, and more, worth up to **\$3000 for WINNERS and BEST DRESSED!**

This counts as ONE event for BOTH Ecorigami and Kabayan Clubs! So, don't miss out!!

Please fill in the **Expression of Interest** form <https://forms.gle/UmDLPFFXSvW6mS376> and we look forward to seeing you there!



### East Asian Poetry Learning Club

Join us to explore traditional and modern poems, learn about their meanings and cultural background, and enjoy poetry together.

Thursday Lunchtime—A2

Bring your friends along!

### FIFA World Cup lunchtime matches in the Rangicentre.

Everyone will be welcome from 1.35 until 2.15 to watch the following games.

16/06 Iran vs NZ

19/06 Mexico vs South Korea

22/06 NZ vs Egypt

25/06 South Africa vs South Korea

30/06 Game TBD (round of 32)

1/07 Game TBD (round of 32)

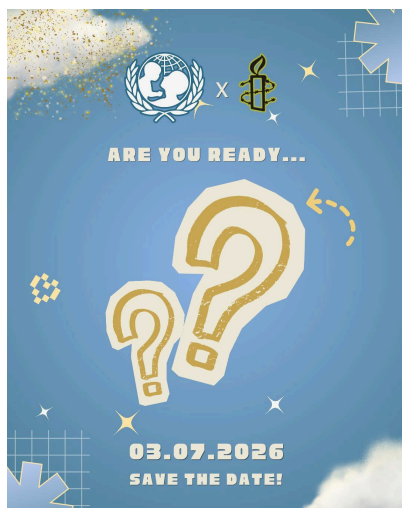
✨HEY EVERYONE!! ✨ We are so excited to announce our **annual quiz night event in collaboration with Amnesty/UNICEF!** 😊

Our Quiz Night will take place on Friday the 3rd of July from 6-9pm (doors open 5:30pm) in the school auditorium!!!

Tickets are \$12 per person so make sure to form a team of 5-8 people and sign up using the link below now! Ticket sales will be in Week 11 from the 29th of June to the 2nd of July, during morning tea and lunch outside the Auditorium. We accept both cash and EFTPOS!

Our causes this year are the Global Malnutrition Crisis and the Humanitarian Crisis in Sudan and all proceeds will go towards supporting this amazing cause and creating a meaningful difference in many people's lives!

Make sure to sign up now as spaces are limited! Don't miss out!! Please have only one member of your team fill out the google form!! <https://forms.gle/GREs3Kq3Zs39jHS36>



**Library closed at lunchtime, Thursday 18th June for the Year 9 Readers' Rumble. Only students who have entered the competition will be allowed in. We will be open as usual at all other times.**

### **Poetry Club Magazine**

The Rangitoto College Poetry Club is proud to announce that we are taking submissions for our next edition of our Poetry Club magazine this year - Nightfall 05! This is a collection of poetry written by you, the students at Rangitoto College! If you're a poet, or if you just like writing, please share your work with us. You can publish this under a pen name if you would like, and this is a fun opportunity for you to get involved.

To get one of your poems in the magazine, fill out this Google form:

<https://forms.gle/5P7Kp8uKBoKnKwKbA>

Join our google classroom for more information: lh5iuqx5

Feel free to come along to Poetry Club meetings, in E6 during Tuesday lunchtimes! If you have any questions, please email [172239@cloud.rangitoto.school.nz](mailto:172239@cloud.rangitoto.school.nz) (Jackson)

### **Pride '26**

Kia ora! This Friday the 19th of June, we will be celebrating Pride Day! Head to the flagpole to buy some yummy treats at the bake sale, draw some cool chalk art, and write a message on the wall of kindness in the auditorium foyer - or have a go at some relaxing colouring in!

#### **Pride Day Bake Sale Volunteers Wanted!**

Kia ora everyone, **Pride Day** is coming up, and we are looking for students to help by baking treats for our **Pride Day Bake Sale**. This is a great way to celebrate diversity, promote inclusion within our school.

This can count towards **CAS and SVA hours** for students who participate. Anyone interested in baking something is welcome to sign up using the link below!

**Drop-off location:** Please drop off your baked goods in **B2** before school on **Friday 19th June**.

Sign up link: <https://forms.gle/NXMa7P2MWavJLZMKA>

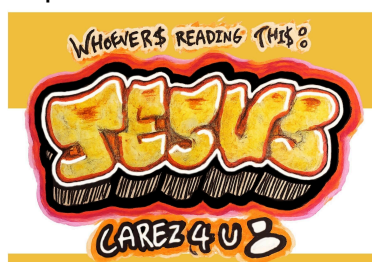
Thank you for helping make Pride Day a success!

### **Rangitoto's Ignite Christian Club – Tuesday lunchtime in C11 🔥🔥🔥🔥**

All goods if you're not a Christian or anything, come along for some games and good chats.

Looking forward to seeing you there 🙌

Hop on our classroom with this code: w7rvlc4



## Sociology Expo: Your Voice, Your Impact

Big ideas are taking over the B-block! On Wednesday, 17th June at lunchtime, swing by B1, B2, and B3 for the Sociology Expo. Check out the incredible awareness campaigns run by our students and find out how you can influence real-world policy. Don't miss out on having your say!

## Upper Harbour Youth Council Uni Expo

The Upper Harbour Youth Council is holding its annual Uni Expo on the 20th of June ( this Saturday), at the Albany Village Hall from 2pm to 5pm! We are welcoming anyone who is interested in hearing from current students at a range of esteemed universities, including Stanford University, USyd, and UPenn. They will be speaking about their experiences studying degrees such as medicine, biochem, political science, and data science - don't miss out on this exclusive experience!!! There will be free food, drinks, along with an opportunity to ask questions at the end so be sure to come along if this sounds like something you are interested in!!!

## RATONGA - SERVING THE COMMUNITY

Upcoming Service Events This Week – Sign up through the Google Sheets below. Please ensure your name, ID number and parent/caregiver contact is added to the sheet (see below for an example). If you CANNOT make it, please contact the organiser through the email in the flyer IN ADVANCE.

**Saturday 20th June – 12pm – 2pm – Rangitoto Restoration Bee – 20 student max**

# Rangitoto Restoration Working Bee

Saturday, 20 June, 10am–12pm

**Meeting location:** Lower gravel carpark behind Hilton Brown Swimming, 17 Volkner Place (No parking)

**Bring:** Full drink bottle and a snack, long sleeves and long pants to protect from scratches, closed shoes, raincoat, hat, sunscreen, warm gear, any medication needed for working in nature

### Transport:

- **Bus: 861** (from Constellation Bus Station or Albany Station)
- **Drop off:** Volkner Place (walk down through Hilton Brown carpark down stairs to bottom car park)
- **Parking:** On-street parking at Volkner Place (No entry of cars into Hilton Brown Swimming)

We go ahead rain or shine. An adverse weather cancellation notice will go up on our Instagram and Facebook page, please check on the day if you are unsure about the weather.

### Contact if you can't find us:

[coordinator@restoringrosedalepark.org.nz](mailto:coordinator@restoringrosedalepark.org.nz)



Sunday 21st June – 2pm – 4pm – Māra Kai – 15 students max



Sunday, 21 June, 2–4pm

# Rangitoto Māra Kai Working Bee

**Meeting location:** At the māra kai along the public path from 159 Bush Road to Rosedale Park

**Bring:** Full drink bottle and a snack, closed shoes, raincoat, hat, sunscreen, warm gear, any medication needed for working in nature

**Transport:**

- **Bus: 861** (from Constellation Bus Station or Albany Station)
- **Drop off:** On Bush Road next to staff carpark (Gate D), 159 Bush Road (NO ENTRY or PARKING in Staff Parking)
- **Parking:** Gate A at the National Hockey Centre (159 Bush Road). Walk through the hockey building until you reach the staff car park. The māra kai (garden) is behind the shed, along the public path

We go ahead rain or shine. An adverse weather cancellation notice will go up on our Instagram and Facebook page, please check if you are unsure about the weather

Contact if you can't find us: [coordinator@restoringrosedalepark.org.nz](mailto:coordinator@restoringrosedalepark.org.nz)

Sign up for events through the link (choose correct event on tabs on the sheet) -

<https://docs.google.com/spreadsheets/d/1I8UDp6bslr7spPe8DYPhGbPXrfaAOTfy-gtb2ZWBve4/edit?usp=sharing>

## SENIORS

### Eat chips - it helps keep people warm!

Did you know chip, biscuit, and foil packets can be fused together to create life-saving thermal blankets for those in need? Plus, it's a massive win for the environment - every foil-lined packet thrown in the rubbish takes up to 80 years to decompose! Let's turn waste into warmth instead.

**How you can help:** The next time you eat chips, biscuits, nachos, or crackers either at school or at home, please don't throw the foil wrapper away! Drop it into the collection bins. By donating your packets, you are joining a nationwide effort to provide warmth to over 102,000 Kiwis battling the cold this winter. Thank you for your kindness and support! Click the link to find out more <https://www.chippacketproject.org/>

### First Aid Certificate Course – Opportunities for Senior Students

Year 11, 12, and 13 students have the opportunity to apply for a short introductory First Aid course. Please note that Year 9 and 10 students, as well as international students, are not eligible to apply.

This is a practical, hands-on course focused on life-saving skills through interactive group work. Completion of the course covers NZQA Unit Standards 6400, 6401, and 6402 (totaling 4 credits).

- **Dates:** Monday 6 July OR Tuesday 29 September (School Holidays)
- **Time:** 8:30 am – 5:00 pm
- **Venue:** Rangi Centre, Rangitoto College

[Click here](#) to apply to attend one of these First Aid courses. LIMITED SPACES

## NZSFW Open Day

The New Zealand School of Food and Wine (NZSFW) is a premier academy, celebrated for its practical, hands-on training in culinary arts, baking, hospitality management, and wine education. **On Wednesday 15 July 2026 from 4pm-5pm**, we will be holding our annual school open day. This is a great opportunity to tour our school, meet our tutors and discuss any questions you may have with our team.

Everyone is welcome, so please [register your attendance](#)

## University of Auckland - Women in Engineering - Enginuity Day

Enginuity Day is a once-a-year opportunity for secondary school girls to explore the possibility of a career as an engineer during a day of activities at the University of Auckland's Faculty of Engineering and Design. Various workshop activities will demonstrate the creativity and problem-solving processes engineers use in real life while giving students an opportunity to try engineering hands-on. Professional engineers, lecturers and current students will be there to talk to students about engineering careers and what it's like to study at the University of Auckland.

**When:** Thursday, 16 July, 8:00am-4:00pm

**Where:** Engineering Building 405, 5-7 Grafton Road, Auckland  
by [Click here to register](#)

## University Open Days

# UNIVERSITY OPEN DAYS

University	Open Day Date(s)
University of Otago	Sun 03 May- Mon 04 May 2026
University of Waikato	Friday 22 May 2026
Lincoln University	Friday 24 July 2026
Massey University	Saturday 15 August 2026
Victoria University of Wellington	Friday 21 August 2026
University of Auckland	Saturday 29 August 2026
AUT (Auckland University of Technology)	Saturday 29 August 2026
University of Canterbury	Friday 28 August 2026
Unitec	Saturday 5 September 2026



## Whitecliffe creative holiday programmes (FREE TO ATTEND)

- Fashion - Upcycled Tote/Patch Workshop - Tuesday 14 July, 10:00am - 3:00pm
- Fashion - Natural Dyeing Workshop - Wednesday 15 July, 10:00am - 12:30pm
- Jewellery - Metal Pendant Workshop - (Two sessions) Mon 6 July / Tues 7 July, 10:00am - 2:00pm
- Fine Arts - The Thinking Hand - Monday 13 July, 10:00am - 12:30pm
- Design - 3D Design - Tuesday 14 July, 10:00am - 2:00pm
- Art & Design - Rip & Print Riso Workshop - Wednesday 15 July, 10:00am - 2:00pm
- IT - Secure Your Network - Wednesday 15 July, 10:30am - 12:00pm
- IT - Building Translator Mobile App - Wednesday 15 July, 1:30pm - 3:00pm

Click on the link to register and find out more <https://www.whitecliffe.ac.nz/news-events/>

## SPORT

### JUNIOR TOUCH & TAG

Please complete this Expressions Of Interest form if you are keen and interested in playing touch and/or tag in Term 4: [EOI Form](#)

**Pick Up and Play: Your Midday Unwind!** 🏸🏀 Looking for a social, inclusive way to stay active? Join us for Pick Up and Play every Tuesday and Friday at lunchtime in Gym 1 and 2. Tuesdays there will be basketball and badminton to choose from. On Fridays, you and your mates can choose between pickleball and badminton. No sign-ups required. Take your shoes and socks off and put your bags in the lockers once you arrive. You are also expected to help with the take down of equipment. Everyone is welcome, no pressure, just play. See you out there!

**2nd Hand Uniform Shop - Term 2 Opening Hours**

**OPEN: 1.30pm – 2.30pm**

- Friday lunchtimes - term-time only

For more information email [uniformshop.rangitotocollege@gmail.com](mailto:uniformshop.rangitotocollege@gmail.com)

Hello everyone, this is Salt & Pepper Chinese Christian Club!

**Our meetings are held every Monday at lunchtime in M2.**

We warmly welcome all students who speak Mandarin or Cantonese to join us and build a welcoming community together. Whether you are a Christian, new to faith, or simply curious to learn more, you are always welcome here. We want this club to be a place of support and encouragement.

If you are going through challenges or feel uncertain about life, feel free to come talk with us — we would love to support, encourage, and pray for you. Please invite your Mandarin- or Cantonese-speaking friends to join our club as well!

大家好，这里是盐与光中文福音团契！

我们每周一中午都在M2教室聚会。

我们欢迎来自所有背景的华人、会说中文/粤语的学生加入我们，一同创造一个温暖的团契。

无论你是基督徒、信仰初学者，还是正在探索信仰，你都属于在我们当中。

我们希望这个团契能成为一个互相支持和鼓励的地方。

如果你正走在这条陌生环境迷茫的路，欢迎随时来和我们聊聊，我们很乐意为你提供帮助、鼓励，並为你祷告。

所以，请邀请更多会说中文/粤语的朋友来参加我们的团契吧！



**Auditorium Foyer Closed Wednesday**

There will be no access through the Auditorium Foyer on Wednesday. Students will need to find a different route to get to their classes.

**E x K FUN NIGHT brought to you by Ecorigami and Kabayan club!**

We are collaborating to bring you a night you can't forget! Come along to our event on **Thursday 25th June 2026 at 4–6pm** in the **Rangi Centre** (doors will open at **3:30pm**).

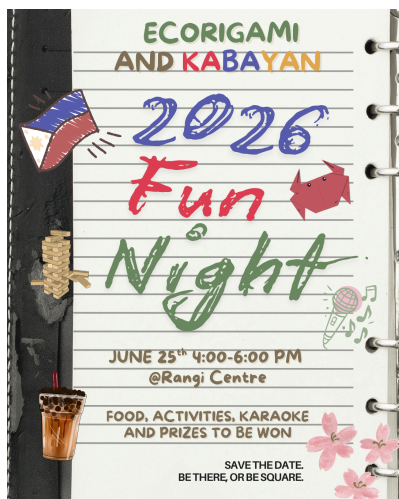
Entry fees are **\$15** and can be paid in front of the auditorium in **Week 9 morning tea and lunchtimes**.

This event will feature traditional fun Filipino party games, along with classic board games and an Origami Wall.

**Snacks and Gong Cha drinks will be provided**, as well as vouchers from Gongcha, Pizza Hut, Bounce, BurgerFuel, Bunnings, and more, worth up to **\$3000 for WINNERS and BEST DRESSED!**

This counts as ONE event for BOTH Ecorigami and Kabayan Clubs! So, don't miss out!!

Please fill in the **Expression of Interest** form <https://forms.gle/UmDLPFFXSvW6mS376> and we look forward to seeing you there!



### FIFA World Cup lunchtime matches in the Rangicentre.

Everyone will be welcome from 1.35 until 2.15 to watch the following games.

16/06 Iran vs NZ

19/06 Mexico vs South Korea

22/06 NZ vs Egypt

25/06 South Africa vs South Korea

30/06 Game TBD (round of 32)

1/07 Game TBD (round of 32)

For any students wishing to enter the **iGeo Olympiad competition**, you must sit a 45 min entry test. There will be two exam sessions offered - you must attend one of them to sit the test. These sessions are running Wednesday 17th 3:30am - 4:15pm and Thursday 18th 7:30am - 8:15am, both in K1.

Any questions please email [claire.mckay@cloud.rangitoto.school.nz](mailto:claire.mckay@cloud.rangitoto.school.nz)

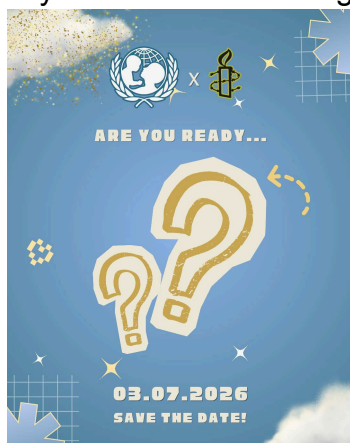
✨HEY EVERYONE!! ✨ We are so excited to announce our **annual quiz night event in collaboration with Amnesty/UNICEF!** 😊

Our Quiz Night will take place on Friday the 3rd of July from 6-9pm (doors open 5:30pm) in the school auditorium!!!

Tickets are \$12 per person so make sure to form a team of 5-8 people and sign up using the link below now! Ticket sales will be in Week 11 from the 29th of June to the 2nd of July, during morning tea and lunch outside the Auditorium. We accept both cash and EFTPOS!

Our causes this year are the Global Malnutrition Crisis and the Humanitarian Crisis in Sudan and all proceeds will go towards supporting this amazing cause and creating a meaningful difference in many people's lives!

Make sure to sign up now as spaces are limited! Don't miss out!! Please have only one member of your team fill out the google form!! <https://forms.gle/GREs3Kq3Zs39jHS36>



**Library closed at lunchtime, Thursday 18th June for the Year 9 Readers' Rumble. Only students who have entered the competition will be allowed in. We will be open as usual at all other times.**

## Pride '26

Kia ora! This Friday the 19th of June, we will be celebrating Pride Day! Head to the flagpole to buy some yummy treats at the bake sale, draw some cool chalk art, and write a message on the wall of kindness in the auditorium foyer - or have a go at some relaxing colouring in!

### Pride Day Bake Sale Volunteers Wanted!

Kia ora everyone, **Pride Day** is coming up, and we are looking for students to help by baking treats for our **Pride Day Bake Sale**. This is a great way to celebrate diversity, promote inclusion within our school.

This can count towards **CAS and SVA hours** for students who participate. Anyone interested in baking something is welcome to sign up using the link below!

**Drop-off location:** Please drop off your baked goods in **B2** before school on **Friday 19th June**.

Sign up link: <https://forms.gle/NXMa7P2MWavJLZMKKA>

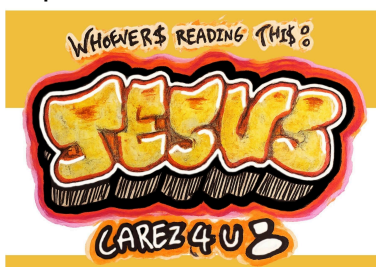
Thank you for helping make Pride Day a success!

## Rangitoto's Ignite Christian Club – Tuesday lunchtime in C11 🔥🔥🔥🔥

All goods if you're not a Christian or anything, come along for some games and good chats.

Looking forward to seeing you there 👍

Hop on our classroom with this code: w7rvlc4



## Sociology Expo: Your Voice, Your Impact

Big ideas are taking over the B-block! On Wednesday, 17th June at lunchtime, swing by B1, B2, and B3 for the Sociology Expo. Check out the incredible awareness campaigns run by our students and find out how you can influence real-world policy. Don't miss out on having your say!

**The Chase is on TODAY (Tuesday 16th) at lunchtime in the auditorium when you will discover which chasers are stepping up and who'll be brave enough to face them. See you there!**

## RATONGA - SERVING THE COMMUNITY

### SPCA TREASURE HUNT 🐾🐶

Are you looking for an adventure and wanting to know more about the SPCA? Then this is the event for you! The RangīSPCA is hosting a treasure hunt around the school where in teams you will follow clue cards that also have fun facts about animal welfare on them. Instructions for the treasure hunt will be posted on the google classroom.

**Sign up on the google form attached** below with a team and come to the auditorium foyer at Morning tea or Lunch on the 18th June (Thursday week 9) to get a mission card to get started. A gold coin donation will be required (per person in the team) when you get your mission card. Join our Google Classroom if you haven't already for more information.

**Only one person from each team needs to fill out the form.**

**Teams will be between 2 - 4!**

The treasure hunt will be held on the **18th and 19th of June** (Thursday and Friday Week 9) at intervals.

This will count as 10 out of 30 points needed to get SPCA on your student profiles.

[Sign up Form](#)

Google Classroom: **4ot74k4u**

# SENIORS

## Careers Drop-in appointment dates Term 2 - Please confirm dates @ Ranginet > Careers

If you have a question about which qualifications you may need, which subjects may be best, different routes into university, apprenticeships, work, university scholarships, overseas study and more your first step is to attend a Careers Drop-In Session; the times of which are advertised below. You don't need to book an appointment - just come along. This means that when you need support in finding out about your next steps, you can get it quickly. One-to-one career appointments will be booked through our "Drop-In Follow-Up" system.

## Career Drop-in session



Y12 & 13 Drop-in Dates (1.35 pm in A1)	Y9, Y10 & Y11 Careers Drop-In Dates (1.35 pm in A1)
Week 6: Tuesday and Thursday	Week 6: Unavailable today
Week 7: Tuesday and Thursday	Week 7: Wednesday
Week 8: Tuesday	Week 8: Wednesday
Week 9: Tuesday and Thursday	Week 9: Wednesday
Week 10: Tuesday and Thursday	Week 10: Wednesday

### Whitecliffe creative holiday programmes (FREE TO ATTEND)

- Fashion - Upcycled Tote/Patch Workshop - Tuesday 14 July, 10:00am - 3:00pm
- Fashion - Natural Dyeing Workshop - Wednesday 15 July, 10:00am - 12:30pm
- Jewellery - Metal Pendant Workshop - (Two sessions) Mon 6 July / Tues 7 July, 10:00am - 2:00pm
- Fine Arts - The Thinking Hand - Monday 13 July, 10:00am - 12:30pm
- Design - 3D Design - Tuesday 14 July, 10:00am - 2:00pm
- Art & Design - Rip & Print Riso Workshop - Wednesday 15 July, 10:00am - 2:00pm
- IT - Secure Your Network - Wednesday 15 July, 10:30am - 12:00pm
- IT - Building Translator Mobile App - Wednesday 15 July, 1:30pm - 3:00pm

Click on the link to register and find out more <https://www.whitecliffe.ac.nz/news-events/>

# MUSIC, DANCE & DRAMA

## A CHORAL CONFECTION – 6pm, Monday 15 June – TICKETS \$5 on sale now at the Finance Window.

Come along and enjoy delectable performances from our school choirs, the Year 9 Vocal class, and selected solo/duo items.

Exchange your ticket for a sweet treat on arrival.



## CONCERTOS & COOKIES – 3pm, Sunday 21 June – TICKETS \$5 on sale now at the Finance Window.

Come along and enjoy a wonderful afternoon of music from **Symphony Orchestra, Chamber Orchestra, String Orchestra, Wind Orchestra** and **Concert Band!**

Exchange your ticket for a cookie on arrival.

## JUNIOR TOUCH & TAG

Please complete this Expressions Of Interest form if you are keen and interested in playing touch and/or tag in Term 4: [EOI Form](#)

**Pick Up and Play: Your Midday Unwind!**   Looking for a social, inclusive way to stay active? Join us for Pick Up and Play every Tuesday and Friday at lunchtime in Gym 1 and 2. Tuesdays there will be basketball and badminton to choose from. On Fridays, you and your mates can choose between pickleball and badminton.

No sign-ups required. Take your shoes and socks off and put your bags in the lockers once you arrive. You are also expected to help with the take down of equipment.

Everyone is welcome, no pressure, just play. See you out there!